

**EB..**

These 2 way Ball Valves are suitable for use in heating and air conditioning applications to control the flow of chilled water, hot water and up to 30% glycol in closed circuit systems.  
In open circuits ie mains water or cooling, mineral deposits will impair the operation.



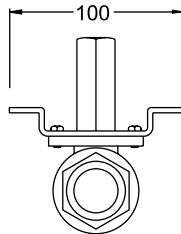
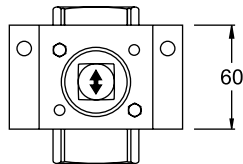
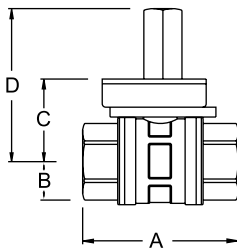
EB..2A to 2H - Body = Brass      EB..FL - Body = Bronze  
Ball : Brass Nickel Plated      Ball Gasket: PTFE  
Valve Stem Gasket: Rubber EPDM      Rotary travel 90°  
Flanged valves to PN16  
Full Bore Passage      Tight Shut-off  
**The motor Part Number must be clearly specified to match each valve ordered.**  
**Supplied complete with mounting bracket for the motor.**  
**Select motor type E08..E16..E24..E32..from separate data sheet.**

Type	Size	Kvs m <sup>3</sup> /h	Max Diff Pressure Bar	Max Pressure Bar	Media Temp °C	Select Motor
<b>EB15-2A</b>	15mm    ½" BSP Female	16.2	6	16	2 - 110	E08.. E16..
<b>EB20-2B</b>	20mm    ¾" BSP Female	26.5	6	16	2 - 110	E08.. E16..
<b>EB25-2C</b>	25mm    1" BSP Female	47	6	16	2 - 110	E08.. E16..
<b>EB32-2D</b>	32mm    1¼" BSP Female	70	6	16	2 - 110	E16..
<b>EB40-2E</b>	40mm    1½" BSP Female	145	6	16	2 - 110	E16..
<b>EB50-2F</b>	50mm    2" BSP Female	191	6	16	2 - 110	E16..
<b>EB65-2G</b>	65mm    2½" BSP Female	340	6	16	2 - 110	E24..

**DIMENSIONS:**

**EB..2A...2H**

	A	B	C	D
<b>EB15-2A</b>	73	17	31	80
<b>EB20-2B</b>	84	21.5	35.5	84.5
<b>EB25-2C</b>	95	26	40	167
<b>EB32-2D</b>	107	30.5	46.5	107
<b>EB40-2E</b>	119	38.5	58	178
<b>EB50-2F</b>	138	47.5	97.5	142.5
<b>EB65-2G</b>	164	60	93	133
<b>EB80-2H</b>	176	67	100	140

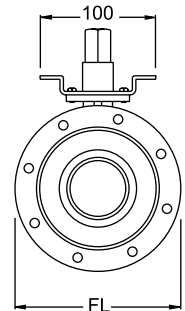
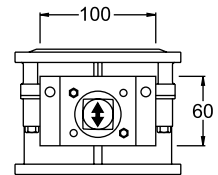
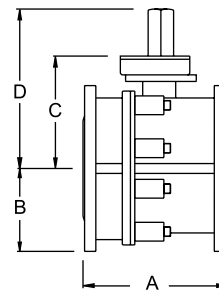


Install the valve with the spindle at any angle vertical to 30° above horizontal.

**EB.. FL**

	A	B	C	D	FL
<b>EB50-2FFL</b>	150	82.5	112.5	152.5	165
<b>EB65-2GFL</b>	170	90.25	120.5	160.5	185
<b>EB80-2HFL</b>	180	100	130	170	200
<b>EB100-2LFL</b>	190	110	140	180	220

↕ Arrow in line with ports = Valve Open

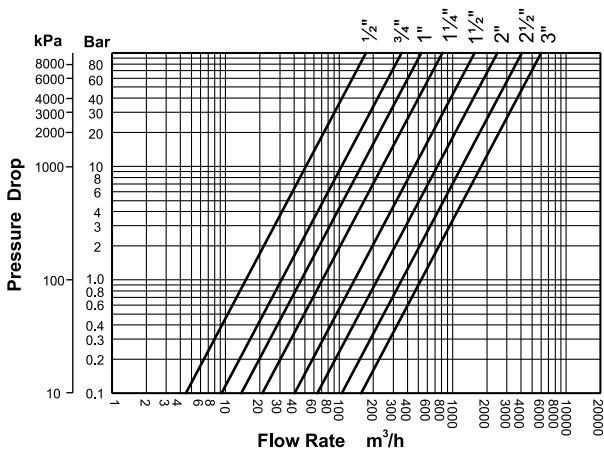


**ACCESSORIES:**

- EE-5EB** Linkage Kit with spring return actuator 15 - 32mm
- EE-6EB** Linkage Kit with spring return actuator 40- 100mm

**FLOW CHARTS:**

**EB..2A...2H**



**EB.. FL**

