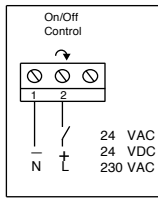


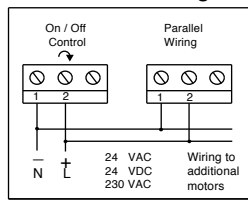
SPRING RETURN DAMPER / VALVE MOTORS

WIRING:

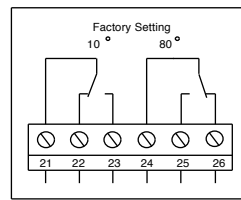
ER16-24 / ER16-230



Parallel Wiring



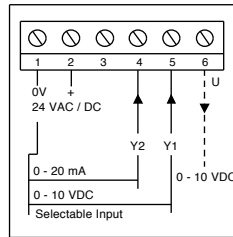
ER16..S



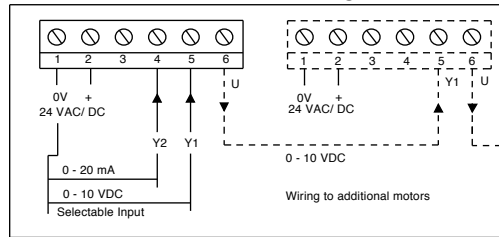
Aux Switches

Example
 Motor anti-clockwise
 21-22 closed at 10° and below
 Motor clockwise
 24-25 closed at 80° and above

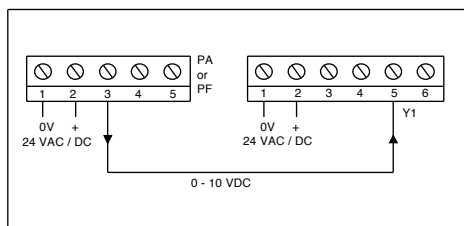
ER16-24M



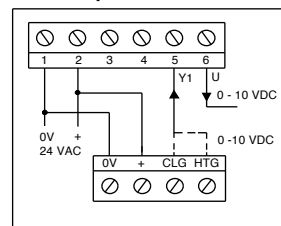
Parallel Wiring



Manual Positioner PAF for ER16-24M

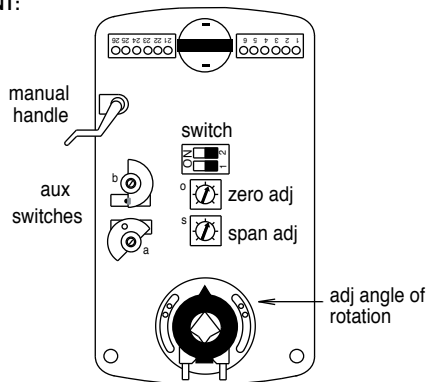


Temperature controller



INPUT RESISTANCE Y1 = 100KΩ Y2 = 500Ω LOAD RESISTANCE U = >50KΩ
 ON POWER CUT THE MOTOR SPRINGS BACK. IF THE INPUT SIGNAL IS CUT, THE MOTOR RETURNS TO 0VDC POSITION.

ADJUSTMENT:



2 x Auxiliary switches Adjustable 0-90°

Rotate the manual handle to the required position, then jerk the handle back to maintain position whilst the switches are adjusted. Rotate the switch cam wheel to just over the microswitch button. To set the second switching point repeat the above steps using the second cam wheel. Once set, release the handle by jerking back again.

Adjustable angle of rotation

This can be adjusted 0-30° from each end by repositioning the coupling segments.

Direction of rotation Clockwise or Anti clockwise

This can be selected by removing the coupling and reversing the adaptor sleeve. Sleeve splines up = clockwise. Sleeve splines down = anti-clockwise

Manual Adjustment

Rotate the handle to the required position, then jerk back the handle to lock. Jerk the handle back again to release.

ER16-24M

Operational Memory selection via switch 1



In the ON position, the full run time and control signal is still achieved even with a reduced angle of rotation down to 30°. This feature is stored in memory and is not lost in the event of a power cut.

If the working range is changed, new values are stored automatically.

Direction of Input signal selection via switch 2



Normal Operation 0-90°
 The spring is tensioned with a rising input signal

Reverse Operation 90-0°
 The spring is tensioned with a falling input signal

Zero Adj / Span Adj - Factory set 0-10vdc / 0-20mA For 2-10 vdc / 4-20mA - adjust start potentiometer to position 2

FOR FUNCTIONAL REASONS THE MOTOR PLUG ON MODULATING MOTORS MUST NOT BE REVERSED.

INSTALLATION:

Min cable size 7/0.2mm
 Screened cable is recommended.

Max length 100m.

The screen should be earthed at controller end only
 Keep away from power cables/units which may cause interference.