

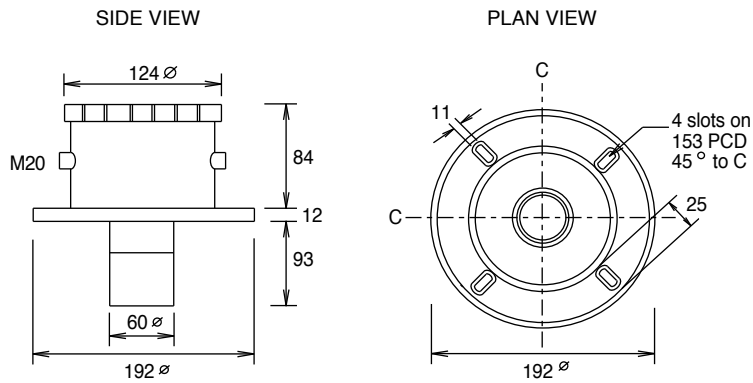
**LIQUID LEVEL TRANSMITTER
4-20mA ULTRASONIC**

ELU-8

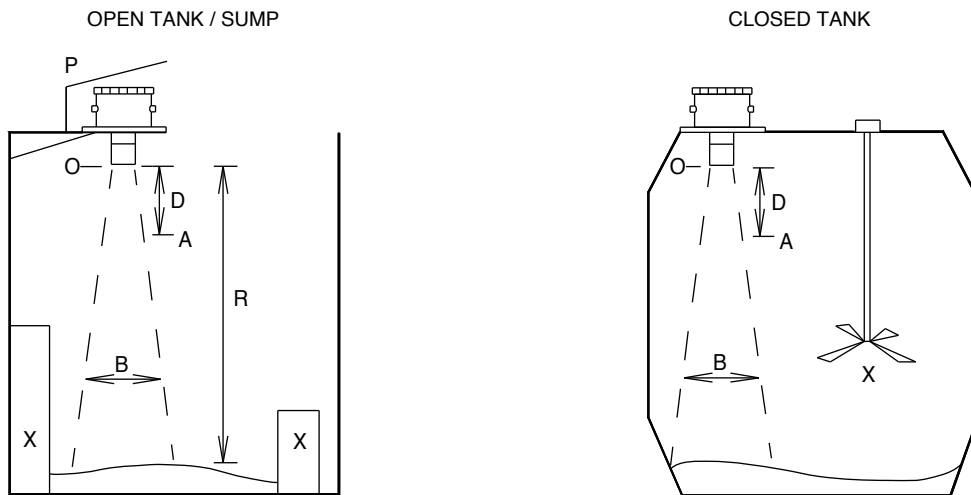
<p>Used to measure fluid depth or target distance in tanks or sumps / slurries. The unit produces a 4-20mA output signal linear across the desired measuring range. Suitable for use with BMS systems. The unit eliminates spurious echoes and ensures a steady output.</p>	 <p>ELU-8</p>	<p>Accuracy 0.25% of measuring range. Pressure -0.25 / +2 bar Programmable display : 4 digit concealed Flange mounting : DN80 PN16, BS10 TABLE D 3I, ANSI 3I. Load at 24VDC 250Ω Ultrasonic cone angle 12° Materials : UPVC, Polypropylene The unit is not suitable for use with any media that has visible fumes.</p>
---	--	---

Type	Measuring Range	Operating Temp °C	Span Min	Resolution	Supply ±15%	Output 2 wire	Max Power	Protection
ELU-8	0.5 / 8m	-10/+60	100mm	1mm	24VDC	4-20mA loop	0.5W	IP68

DIMENSIONS:



INSTALLATION:



- O : Origin of measurement. All measurements (distances / depths) are taken from O.
- D : Dead band 500mm.
- A : Max media height for signal range. If measurement is required to the top of the tank, mount the transmitter 500mm higher.
- P : Protect the unit from sunlight.
- B : Beam width 0.21 x Range (R)
- X : Beam must not touch any obstacles. Ensure that the beam path is uninterrupted.

Mounting :

- OPEN TANK ñ Mount at least 0.5m above the highest media level and 105mm away from walls for every 1m of media depth.
- CLOSED TANK ñ Mount at least 0.5m above the highest media level. Do not mount the unit in the centre of the tank to monitor powder or granules etc. which can form into a cone shape and give inaccurate readings - in this case the unit should be mounted close to the edge as shown.

Use plastic mounting bolts. Do not over-tighten as this may cause acoustic coupling to the mounting and give false readings. The transmitter must be mounted on the gasket supplied.