

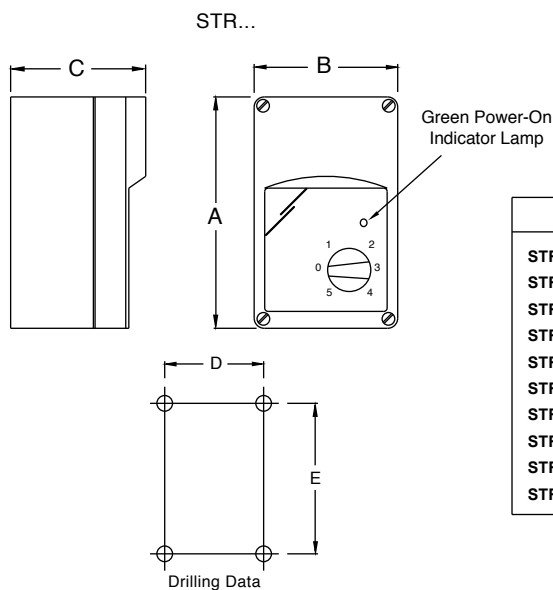
## FAN SPEED CONTROLS 230VAC 1 PHASE 5 SPEED MANUAL OPERATION

STR..

<p>These transformer controls vary the speed of fan motors via a 1-5 step manual selector knob on the front which decreases or increases the supply voltage to the motor. Before selecting a control its compatibility must be ensured. Please read the Motor Selection Guide on a separate data sheet.</p>		<p>Suitable for 2 or 3 wire motors                  Power-On Lamp                  Internal fast blow fuse "F" type                  Start current can be 3 x nominal current.</p> <p>When the unit is switched on and also when power is re-applied (with the speed control switch already in the on position), it will run up to the speed that is set by the knob position. The maximum current is based on max ambient of 30°C.</p> <p>The selected Speed Control's maximum current must be just larger than the nominal motor running current.</p> <p>Several motors can be connected at once - do not exceed the speed control's current rating.</p>
---	---	--

Type	Nominal Current	Supply 50-60Hz	Fast Blow Fuse "F"		Start Sequence	Manual Speed Adjustment	Mounting	Case	Enclosure
			5x20	6x32mm					
<b>STR-1-08-L10</b>	0.8A	230Vac	1.5A	-	Knob Position	5 Step	Wall	Plastic	IP54
<b>STR-1-15-L10</b>	1.5A	230Vac	2A	-	Knob Position	5 Step	Wall	Plastic	IP54
<b>STR-1-22-L10</b>	2.2A	230Vac	2.5A	-	Knob Position	5 Step	Wall	Plastic	IP54
<b>STR-1-35-L10</b>	3.5A	230Vac	5A	-	Knob Position	5 Step	Wall	Plastic	IP54
<b>STR-1-50-L10</b>	5A	230Vac	8A	-	Knob Position	5 Step	Wall	Plastic	IP54
<b>STR-1-75-L10</b>	7.5A	230Vac	10A	-	Knob Position	5 Step	Wall	Plastic	IP54
<b>STR-1-100-L10</b>	10A	230Vac	-	14A	Knob Position	5 Step	Wall	Plastic	IP54
<b>STR-1-130-L10</b>	13A	230Vac	-	18A	Knob Position	5 Step	Wall	Plastic	IP54
<b>STR-1-160-L10</b>	16A	230Vac	-	25A	Knob Position	5 Step	Wall	Metal	IP54
<b>STR-1-200-L10</b>	20A	230Vac	-	30A	Knob Position	5 Step	Wall	Metal	IP54

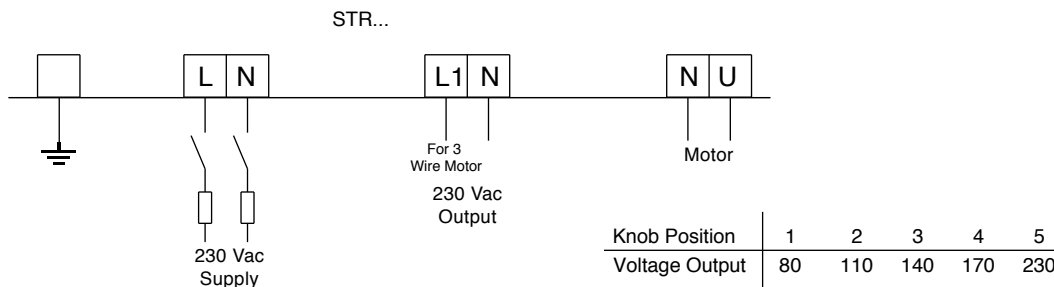
**DIMENSIONS:**



	A	B	C	D	E	Weight(kg)
<b>STR-1-08-L10 --/105</b>	180	115	85	98	140	1.4
<b>STR-1-15-L10 --/105</b>	180	115	85	98	140	1.7
<b>STR-1-22-L10 --/105</b>	180	115	85	98	140	2.5
<b>STR-1-35-L10 --/105</b>	280	200	140	155	193	4.5
<b>STR-1-50-L10 --/105</b>	280	200	140	155	193	4.9
<b>STR-1-75-L10 --/105</b>	280	200	140	185	243	6.0
<b>STR-1100-L10 --/106</b>	300	300	170	250	250	9.5
<b>STR-1130-L10 --/106</b>	300	300	170	250	250	13
<b>STR-1160-L10</b>	430	300	230	125	350	15
<b>STR-1200-L10</b>	430	300	230	135	350	18

**Mount vertically to allow free ventilation around the unit**

**WIRING:**



All cables & external fuses must be fitted according to local regulations, safety and motor manufacturers requirements.

**CAUTION:** These products may be connected to 230VAC supply. Isolate device from electrical supply before removing cover. Observe design limits of temperatures and electrical ratings.

The device should be checked by a qualified technician before applying any voltage. Observe all relevant safety precautions, wiring/earthing regulations & electrical ratings. Ensure all entry holes are completely sealed for all IP65/weatherproof models.

Always ensure the device operates at the correct electrical rating. If failure of the device can cause damage a safety backup control should be fitted. All data is for guidance purposes only, subject to change without prior notice and not guaranteed to be absolutely correct unless confirmed by us in writing.

