

**ROOM THERMOSTATS
1 STAGE**

TA-2.. PTR01..

These products can be used to monitor the temperature inside buildings and switch heating, cooling or other units. These units are tamperproof.



TA-2
Adjustable limit stops under the cover
Main adjustment via knob.
Backplate for 1 gang BS box is included.

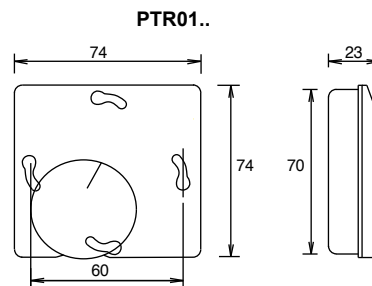
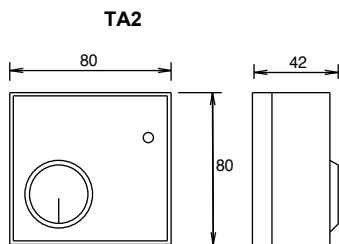
PTR01-010 / 045 / 048
Knob adjustment only.
Range and limit stops provided.
Order backplate separately.
Enclosure Flammability = UL94-V0

PTR01-910
Adjustment under the cover.

Type	Stages	Range °C	Diff °C approx	230VAC	Function	Sensing Element	Enclosure
TA2	1	5/30	1	SPDT 10(2.5)A	Volt Free Contacts	Htg or Clg	IP20
PTR01-045	1	-20/+30	0.5	SPDT 10(3)A	-	Htg or Clg	IP30
PTR01-010	1	5/30	0.5	SPDT 10(3)A	-	Htg or Clg	IP30
PTR01-048	1	10/60	0.5	SPDT 10(3)A	-	Htg or Clg	IP30
PTR01-910*	1	5/30	0.5	SPDT 10(3)A	-	Htg or Clg	IP30

*Concealed adjustment.

DIMENSIONS:



- ACCESSORIES:**
- EG-1000** Stat Guard Internal Dims 133 H x 155 W x 70 D
 - EG-2000** Stat Guard Internal Dims 102 H x 123 W x 60 D
 - EG-3000** Stat Guard Internal Dims 123 H x 196 W x 70 D

High impact polycarbonate, virtually unbreakable. Supplied with lock & key

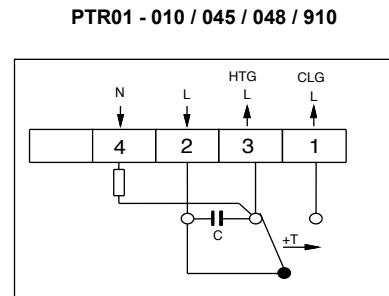
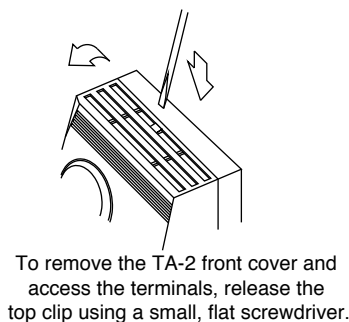
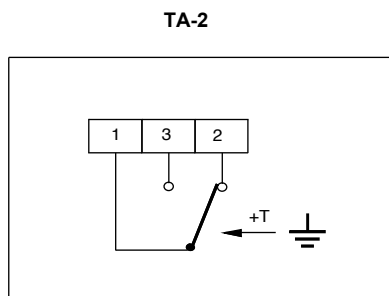


EE-BP2 Backplate for PTR01.. will fit square or round outlet boxes.

EG..

EE-BP2

WIRING:



INSTALLATION: Install at a height of approx. 1.5m
Keep away from radiators, direct sunlight & other heat sources.